

WRL Economic Impact Assessment

Wednesday 16 October 2024



AGENDA



Delivered by

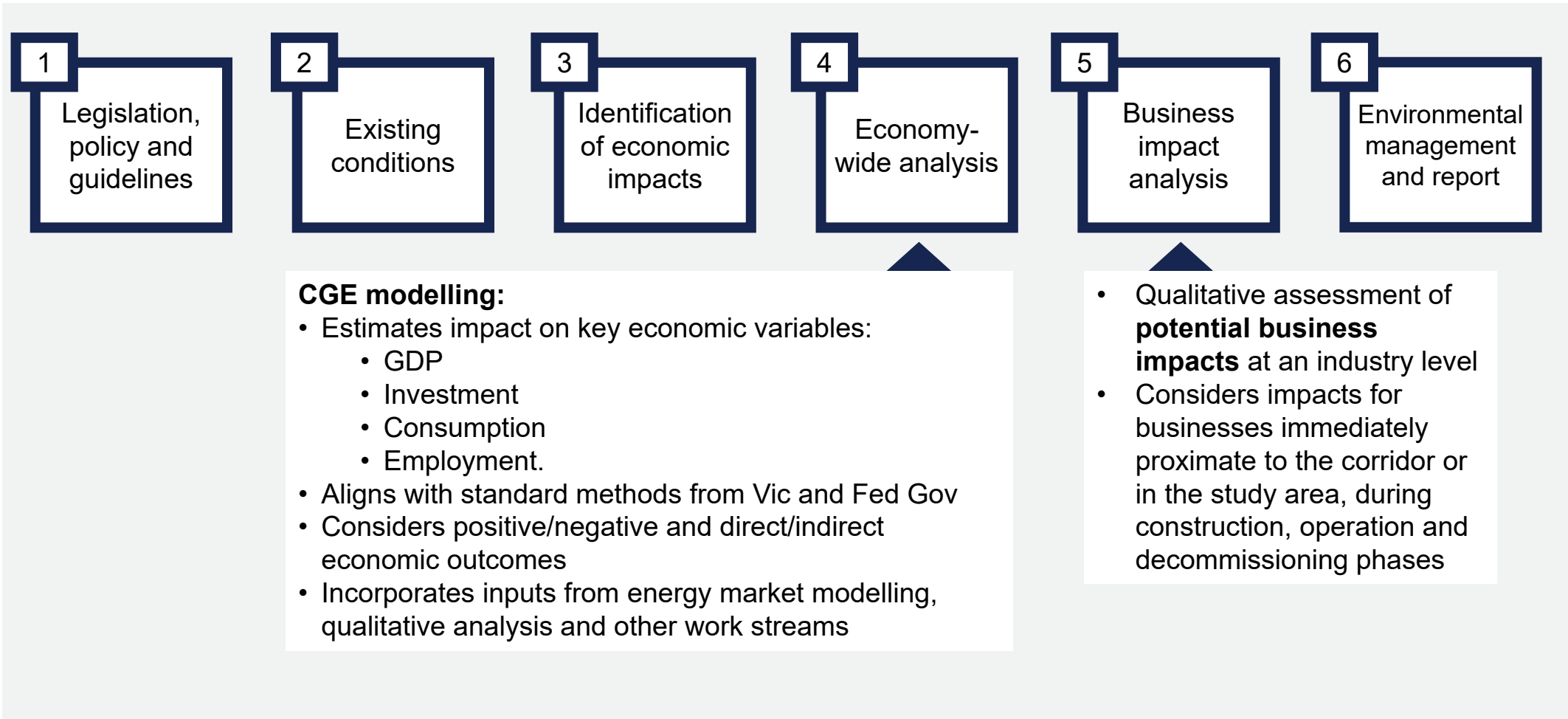
AusNet

1. EES Scoping Requirements
2. Methodology Overview
3. Study Area
4. Existing Conditions Summary
5. Summary

1. EES Scoping Requirements

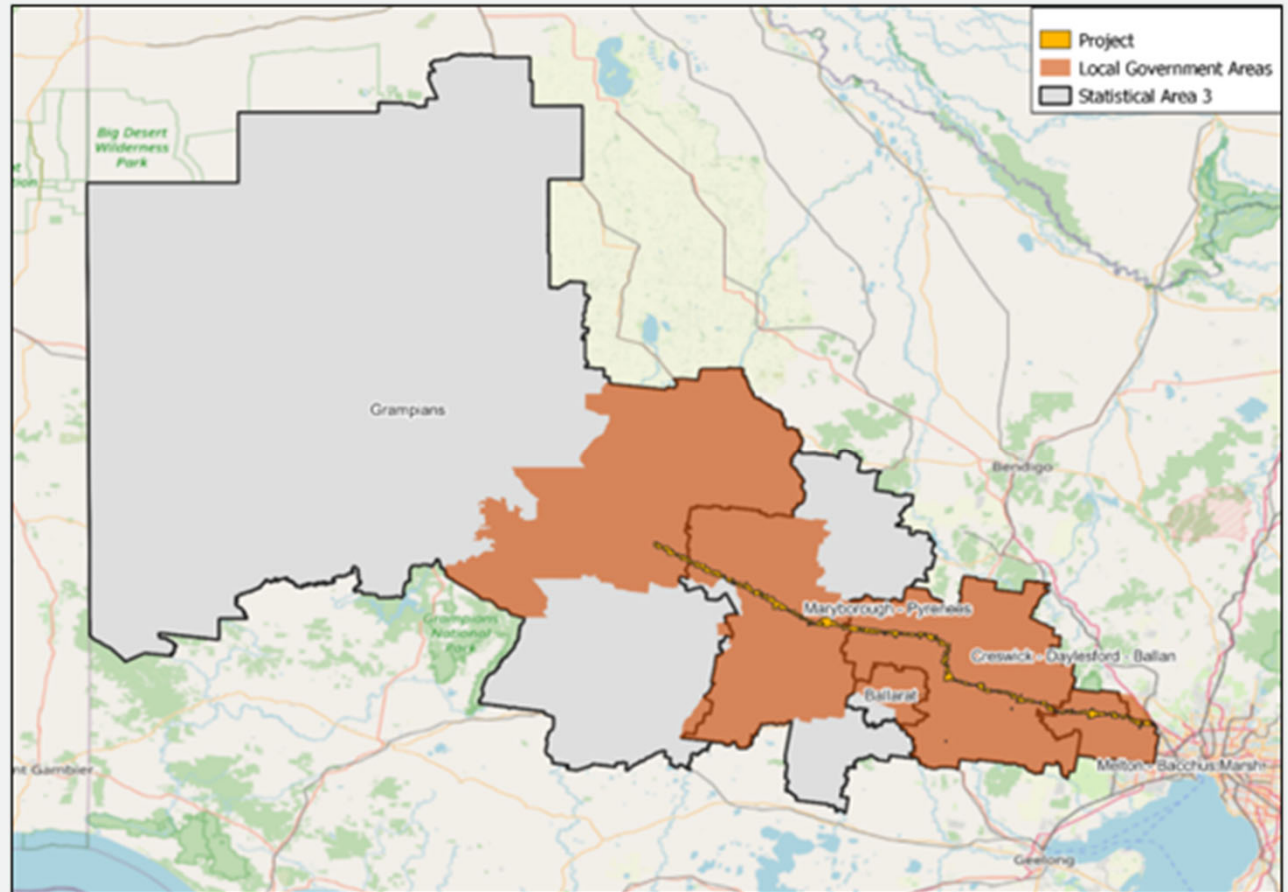
Category	Scoping requirement
Key issues	Potential significant disruption to existing and/or proposed land uses with associated economic and social effects
	Potential adverse economic and social effects, both direct and indirect
Existing environment	Describe the project area of interest and its environs in terms of land use (existing and proposed), land classification and suitability for specific purposes, development, urban areas, townships, residences, farming and other economic activities, forestry, tourism and conservation reserves
	Identify relevant local regional and state policies
Mitigation measures	Outline measures to avoid or minimise potential adverse effects of the project and enhance benefits to the community and businesses in or near the project area of interest
Likely effects	Identify potential economic effects of the project, considering direct and indirect consequences on land use, farming and agriculture, other businesses, employment and local and regional economy
	Identify potential impact on tourism and tourist attractions and recreation within and around the project area of interest
Performance criteria	Outline measures to monitor the success of commitments to mitigate or manage effects on land use and socioeconomic values during all phases of the project
	Describe and evaluate proposed measures to monitor potential residual social, land use and economic impacts and describe contingency measures for responding to unexpected impacts

2. Methodology Overview



3. Study Area

- Project extends across **five Statistical Area 3 (SA3) regions** in western Victoria (the “study area”).
- **Direct** economic impacts affect this regional economic catchment.
- Broader (**indirect**) economic impacts are assessed across the Rest of Western Victoria, Rest of Victoria and Rest of Australia.



Source: PwC analysis of GIS project layers and SA3/LGA data, 2023

4. Existing Conditions Summary (1/2)

- Study Area contains a **working age population of 275,000**.
- Median family, household and personal incomes, and rent and mortgage payments are all **lower than the state averages** (with the narrow exception of median weekly household income in Melton – Bacchus Marsh).
- Land in the study area is comprised of:
 - **agricultural land**
 - land used for **residential and community facilities**
 - land used for **commercial or industrial purposes**
 - **natural environment**
 - **tourism activity**.

Source: Working age population (Wilson, Grossman and Temple 2022). Income and housing cost data sourced from ABS.

4. Existing Conditions Summary (2/2)

The study area contains:

- Over **30 per cent** of Victoria’s **wind energy projects**.
- **Approved solar energy projects** accounting for **12 per cent** of all solar energy projects across Victoria.
- Currently **two operating battery energy storage projects**, the Bulgana Battery Energy Storage System (BESS) and the Ballarat BESS.

Top 3 industries of employment by SA3

Rank	Grampians	Maryborough - Pyrenees	Ballarat	Creswick – Daylesford – Ballan	Melton – Bacchus Marsh
1	Health care & social assistance	Health care & social assistance	Health care & social assistance	Agriculture, forestry & fishing	Construction
2	Agriculture, forestry & fishing	Agriculture, forestry & fishing	Education & training	Accommodation & food services	Education & training
3	Retail trade	Retail trade	Retail trade	Health care & social assistance	Retail trade

Source: Energy project data (Department of Transport and Planning 2024)

5. Summary



Delivered by

AusNet

- **Construction Phase:** Short-term disruptions to landholders and businesses; positive impacts from increased investment and employment.
- **Operation Phase:** Long-term cost savings in electricity generation and transmission; potential negative impacts on some land values.
- **Decommissioning Phase:** Similar economic effects as during construction but likely a lesser magnitude.
- **GDP Impact:** project impact on Australia GDP and study area GRP TBC.
- **Employment:** project impact on Australia employment and study area employment TBC.
- **Business Impacts:** qualitative impact assessment TBC.

COMMERCIAL IN CONFIDENCE

Questions?



Delivered by

AusNet



1300 360 795
info@westernrenewableslink.com.au
westernrenewableslink.com.au

BUSINESS USE ONLY