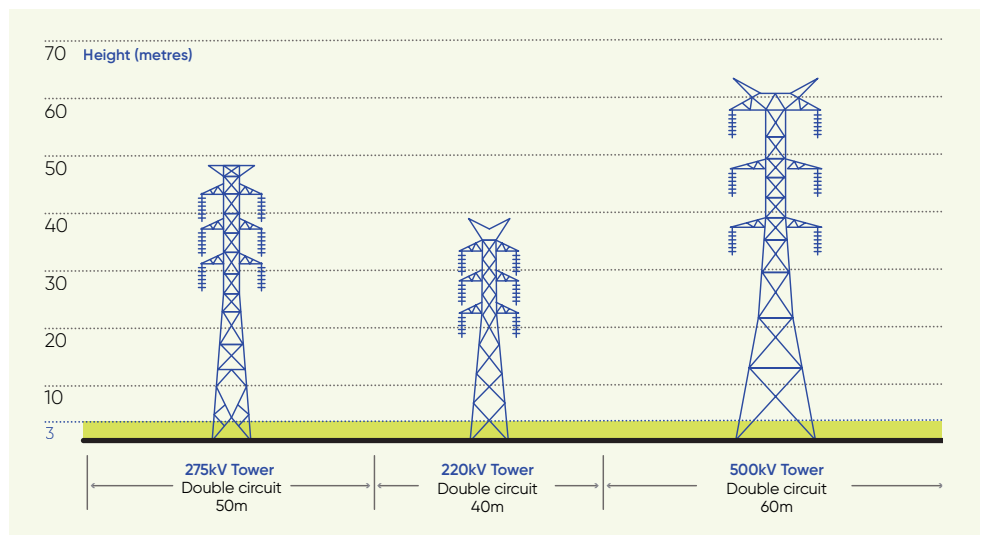


# Permitted vehicle and equipment heights

Height clearances are important to ensuring safety under and around transmission lines. There are differences between the existing transmission network and the proposed Western Renewables Link.

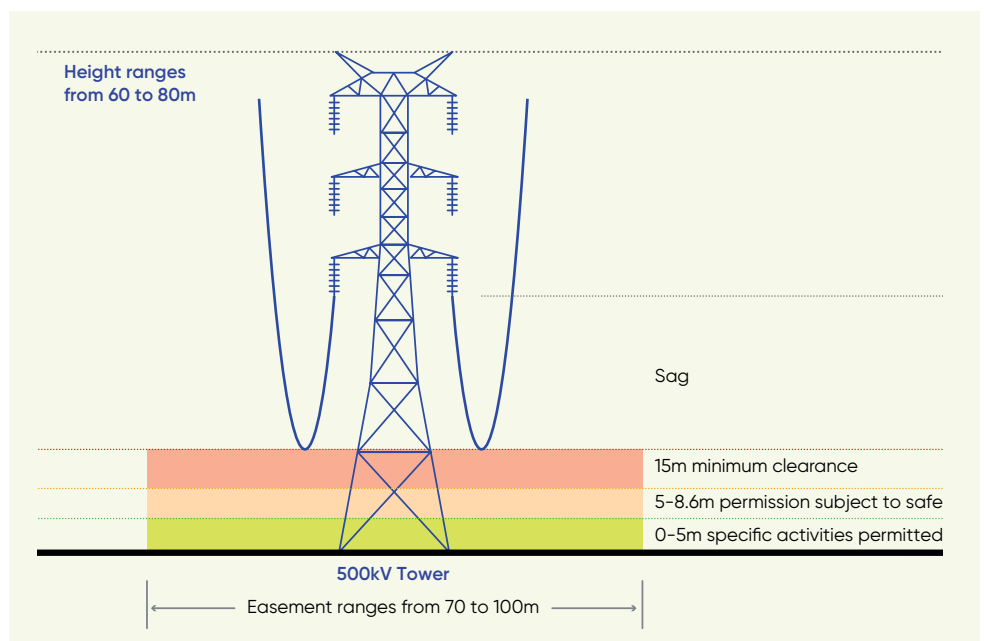
## Existing AusNet transmission lines

Use of vehicles and equipment such as cranes, excavators, elevated working platforms and the like exceeding 3m in operating height is prohibited under existing transmission lines. A higher operating height limit is subject to sufficient clearances to the conductors and requires the issue of a 'Permit to Work Adjacent to Exposed High Voltage Electrical Apparatus'. To arrange a safety assessment or permit, contact AusNet Services by email on [ptw@ausnetservices.com.au](mailto:ptw@ausnetservices.com.au).



## Proposed Western Renewables Link 500kV

The proposed WRL 500kV transmission line is being designed with a minimum 15m ground clearance. Vehicles and equipment of up to 5m in height will be able to travel and operate under the transmission line without permission from AusNet. Vehicles and equipment between 5m and 8.6m in height may be permitted to operate subject to an AusNet safety assessment. The maximum height of vehicles and equipment cannot exceed 8.6m. The AusNet safety assessment will determine and advise whether a spotter and/or permit to work will be required for your specific property, vehicles, equipment and operations.



Delivered by

**AusNet**



### Steps to arrange a safety assessment

1. To arrange a safety assessment or permit, contact AusNet by email at [ptw@ausnetservices.com.au](mailto:ptw@ausnetservices.com.au).
2. Complete and return the permit to work form.
3. Applications will be reviewed within 5 business days of receipt.
4. We will undertake a desktop analysis and contact you if we require any further information. Typically, it will take 10 business days to complete a safety assessment or permit application.

You can also contact your Land Liaison Officer to discuss any requirements for activities within the easement and they can coordinate a safety assessment request.






### More information

- Information about permitted and prohibited activities around existing AusNet transmission lines can be found in AusNet's [Guide to living with transmission line easements](#).
- Information about permitted activities under the proposed Western Renewables Link transmission line can be found in the [Landholder Guide: Easement safety and permitted activities](#). As noted in the guide, the Western Renewables Link is being designed with greater ground clearances based on landholder feedback about the heights of vehicles and machinery used in the project area.
- For more information about no go zones, visit [Energy Safe Victoria's website](#).
- Visit the project website [www.westernrenewableslink.com.au](http://www.westernrenewableslink.com.au) for up-to-date project information.

### More information

Visit the project website [westernrenewableslink.com.au](http://westernrenewableslink.com.au) for the latest project information.

### Contact us

 [westernrenewableslink.com.au](http://westernrenewableslink.com.au)  
 1800 WRL WRL (975 975)  
 [info@westernrenewableslink.com.au](mailto:info@westernrenewableslink.com.au)

Delivered by

**AusNet**