

# Updated proposed route overview



Delivered by

**AusNet**

# Introduction

The proposed Western Renewables Link project is critical infrastructure required to unlock the renewable energy potential of western Victoria as a key renewable energy zone and help deliver clean and affordable energy to all Victorians.

We are listening and responding to landholder and community feedback on the proposed route, and continuing to make updates to the proposed route and tower and access track locations in response to landholder and community feedback and technical specialist advice.

## Project overview

The Western Renewables Link is a proposed 500kV double circuit overhead electricity transmission line from Bulgana in western Victoria to Sydenham in Melbourne's north-west.

As we transition from coal, a new transmission line is required to transport renewable energy from wind and solar farms in western Victoria, a key renewable energy zone, to homes and businesses across the state and into the National Electricity Market.

The Victorian Minister for Planning has determined that an Environment Effects Statement (EES) is required for the Western Renewables Link project. We're working toward finalising and submitting the EES to the Victorian Government. The Department of Transport and Planning will review the EES submission to ensure the draft EES addresses the scoping requirements before it is released for the public to view and comment on. A planning scheme amendment is proposed as the primary planning approval for the Western Renewables Link. The draft planning scheme amendment will be an attachment to the exhibited EES for public consideration and comment.

We expect the Environment Effects Statement public exhibition and inquiry, which includes a public hearing, will take place throughout 2025. Further information about the EES process is available on the Planning Panels Victoria website: [www.planning.vic.gov.au/environmental-assessments](http://www.planning.vic.gov.au/environmental-assessments).

You can find the latest project information on the [project website](#).

## Acknowledgement of Traditional Owners

AusNet acknowledges the Traditional Owners of the lands on which the proposed Western Renewables Link will operate, and pays respect to their Elders past, present and emerging. We recognise the role of each Registered Aboriginal Party and Traditional Owners in the management, protection, and promotion of cultural heritage, connection to Country, cultural awareness and land access.

We will continue to work in partnership with First Peoples - State Relations Victoria and the recognised Registered Aboriginal Parties of the Baringi Gadjin (representing the Wotjobaluk, Jaadwa, Jadawadjali, Wergaia and Jupagulk Peoples), Eastern Maar, Djaara (Dja Dja Wurrung), Wadawurrung and Wurundjeri Woi Wurrung Traditional Owners Corporations, to deliver the project.

## Narrowing down the area of interest

### Area of interest

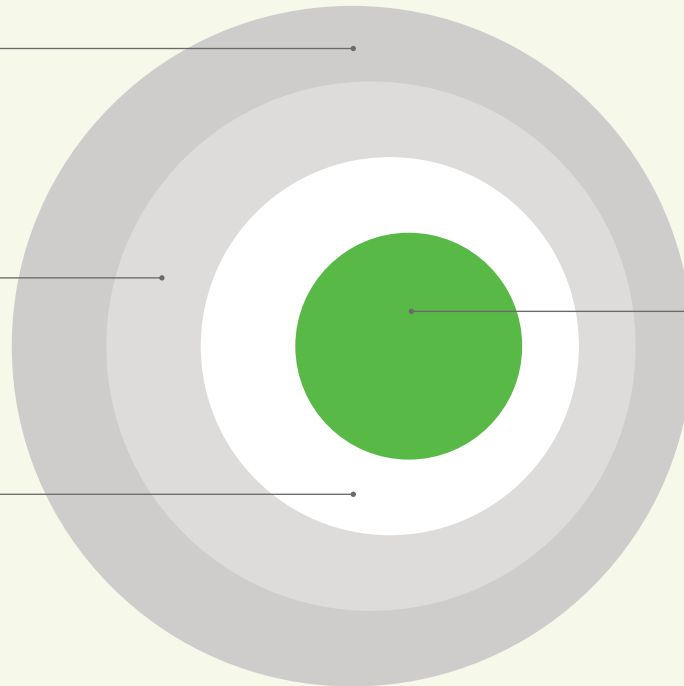
A broad geographical area was investigated to understand the constraints and opportunities to identify corridors for further investigation.

### Multiple corridors

Based on constraints and opportunities in the area of interest, multiple corridors were identified for further investigation in February 2021.

### Single corridor

The least constrained single corridor was identified based on additional assessment, including advice from technical specialists, in June 2021.



### Proposed route

Based on the findings from technical studies, field surveys and investigations, and community and stakeholder feedback, a proposed route was identified in November 2021. After gaining feedback from landholders, stakeholders and communities, an updated proposed route was released in August 2022. After changes to the project in 2023, including the increase in capacity of the 220kV section to 500kV, an updated proposed route to the north of Waubra was released in May 2024 no longer connecting into the Waubra Terminal Station.

## How landholder, community and stakeholder input is being used in the proposed route

Landholder, community and stakeholder feedback, combined with the findings of technical studies, field surveys and investigations, have informed the selection of the proposed route and alternatives since 2020. As we receive new technical and landholder information, we have continued to refine the proposed route to minimise the overall impact of the proposed transmission line on landholders, the community, and the environment.

We have also worked directly with landholders on the proposed route since 2021 to understand their operational and lifestyle requirements, business, farming and property specific issues and concerns. All landholders have now received detailed information for their properties about the proposed route, including locations for towers, access tracks and construction areas. In response to landholder feedback, we have been able to make changes to the proposed route and move proposed tower and access track locations to reduce property impacts. While all landholder requests have been considered, each request must be assessed against the aim to avoid and minimise overall project impacts, meaning not all requests have resulted in updates to the proposed route.

We are working closely with the Australian Energy Market Operator (AEMO), VicGrid and the Department of Transport and Planning to ensure updates to the Western Renewables Link proposed route align to the requirements of the broader Victorian transmission network. We are also working with Powercor and other utility providers to confirm the approach for crossing existing infrastructure.

While we are currently finalising the Environment Effects Statement, we are continuing to listen to landholder and community feedback and make updates to tower and access track locations in response to their input and technical specialist advice.

## Changes to the proposed project

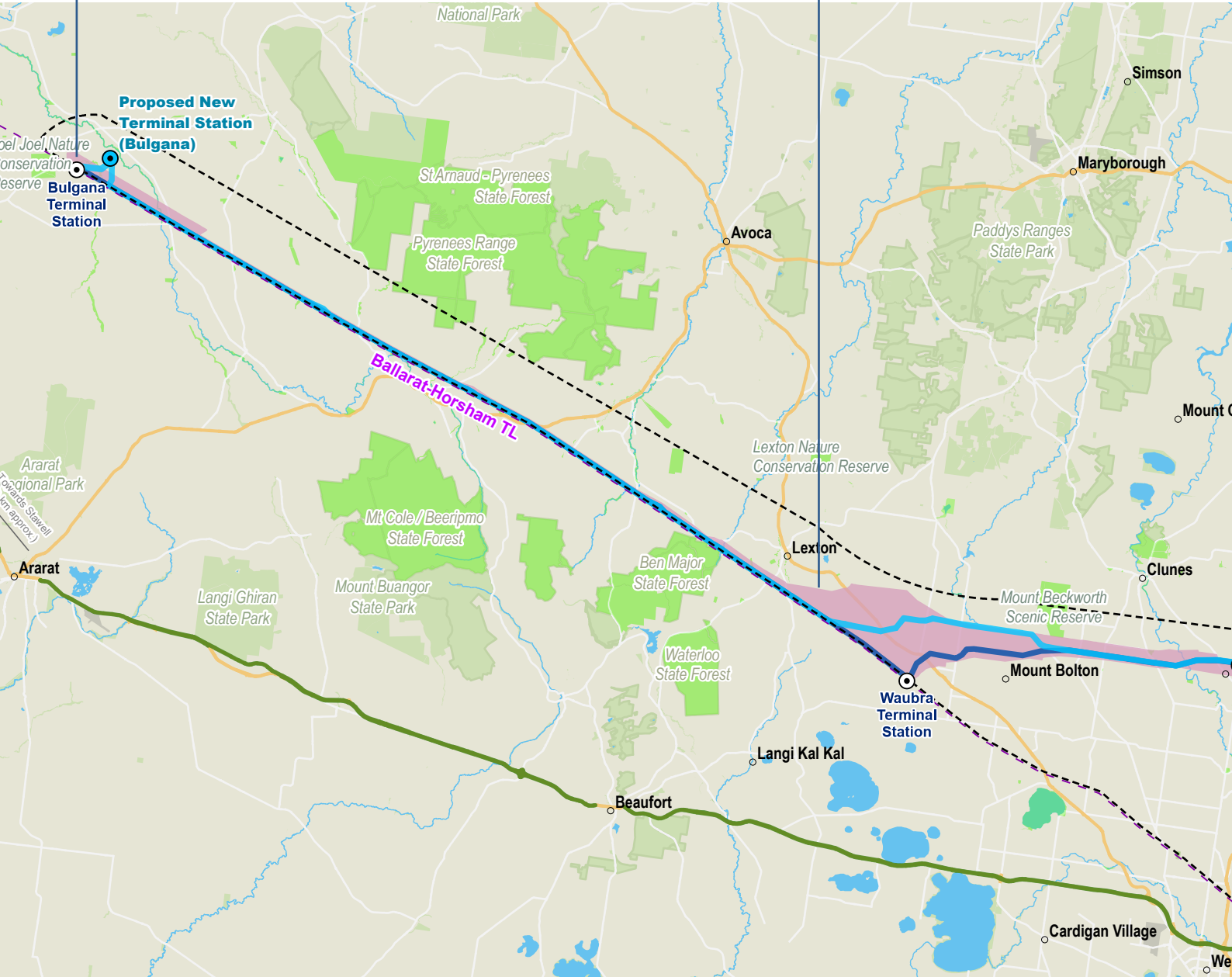
The Western Renewables Link is now proposed as a 500kV transmission line, increasing the capacity of renewable energy that the line can carry. The increase from 220kV to 500kV between Bulgana and Ballarat has led to a variety of changes to the proposed route. Based on landholder, community and technical specialist feedback we have also made updates to tower and access track locations along the proposed route.

The latest updates to the proposed route are shown on the following pages, alongside the previous proposed route for the Western Renewables Link project.




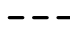





# Proposed route map with updates

## Section 01 Bulgana to Waubra

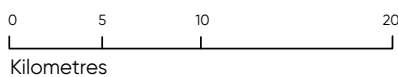
## Section 02 Waubra to Glendonald



### Map legend

-  Updated proposed route (2024)
-  Proposed route (Updated 2022)
-  Single corridor
-  Area of interest
-  Existing terminal station
-  Proposed terminal station
-  Existing transmission line
-  Parks, reserves and forests
-  Western Highway

### Scale:

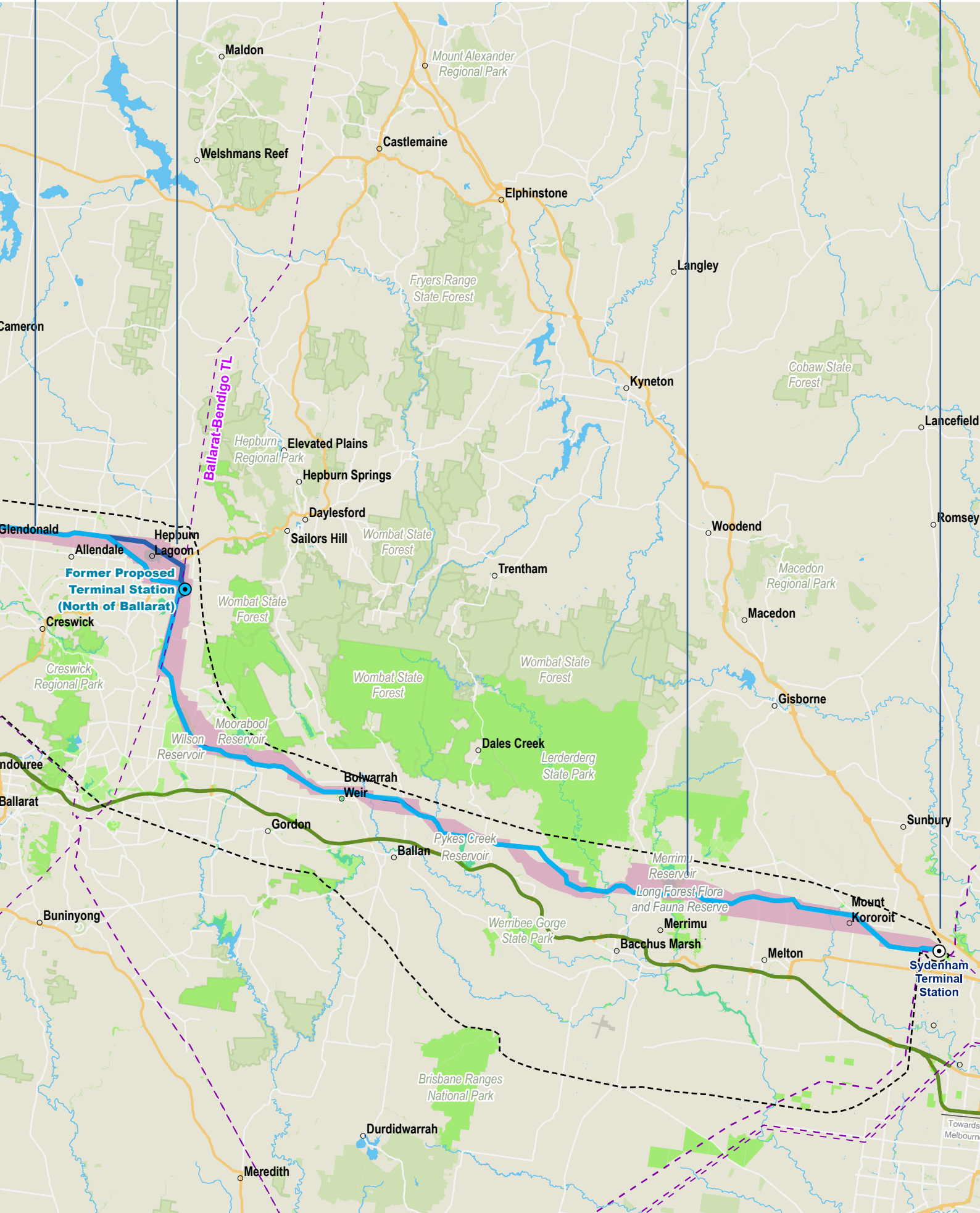




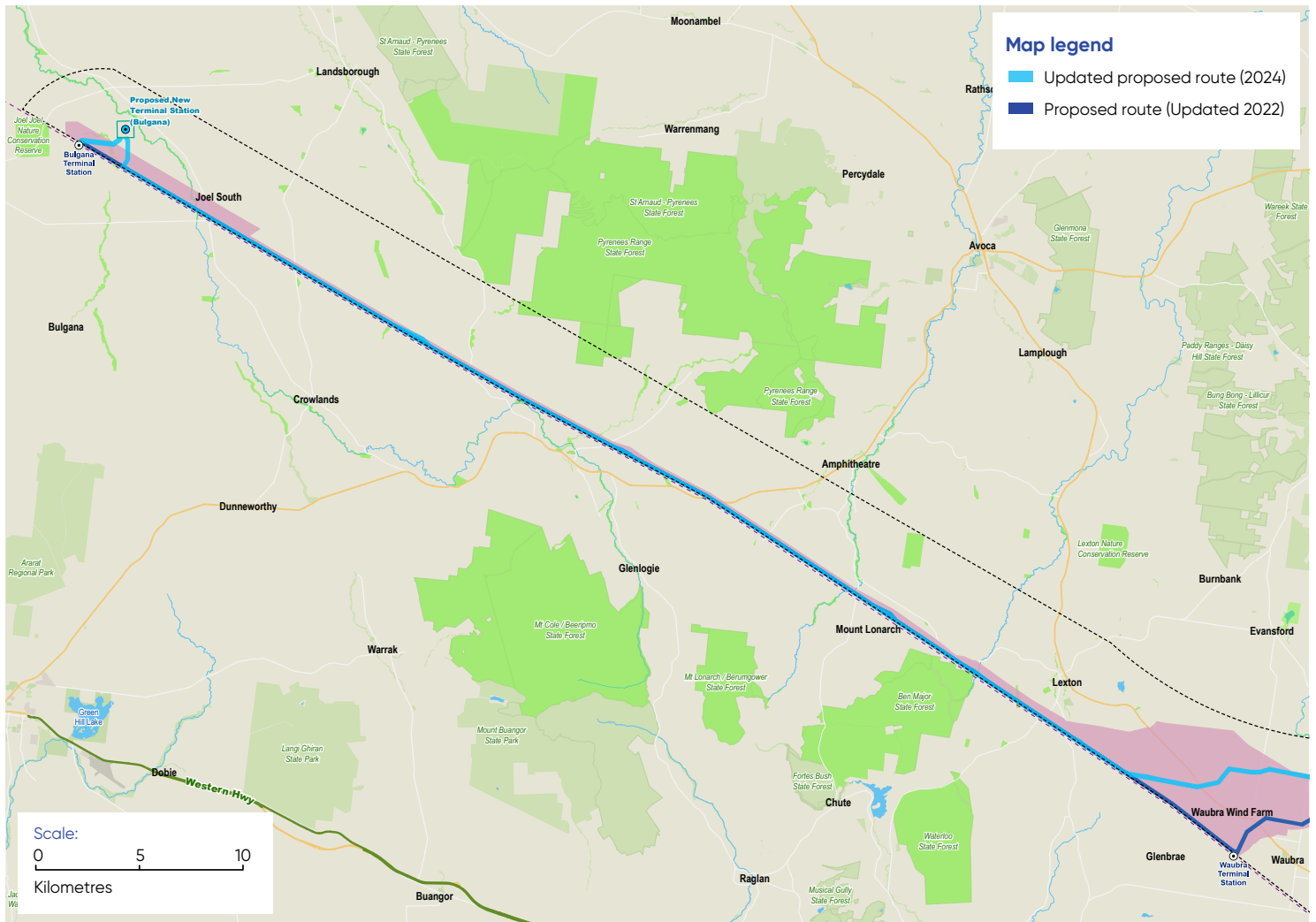
**Section 03**  
Glendonald to  
Mount Prospect

**Section 04**  
Mount Prospect  
to Long Forest

**Section 05**  
Long Forest to  
Sydenham



# Section 1: Bulgana to Waubra



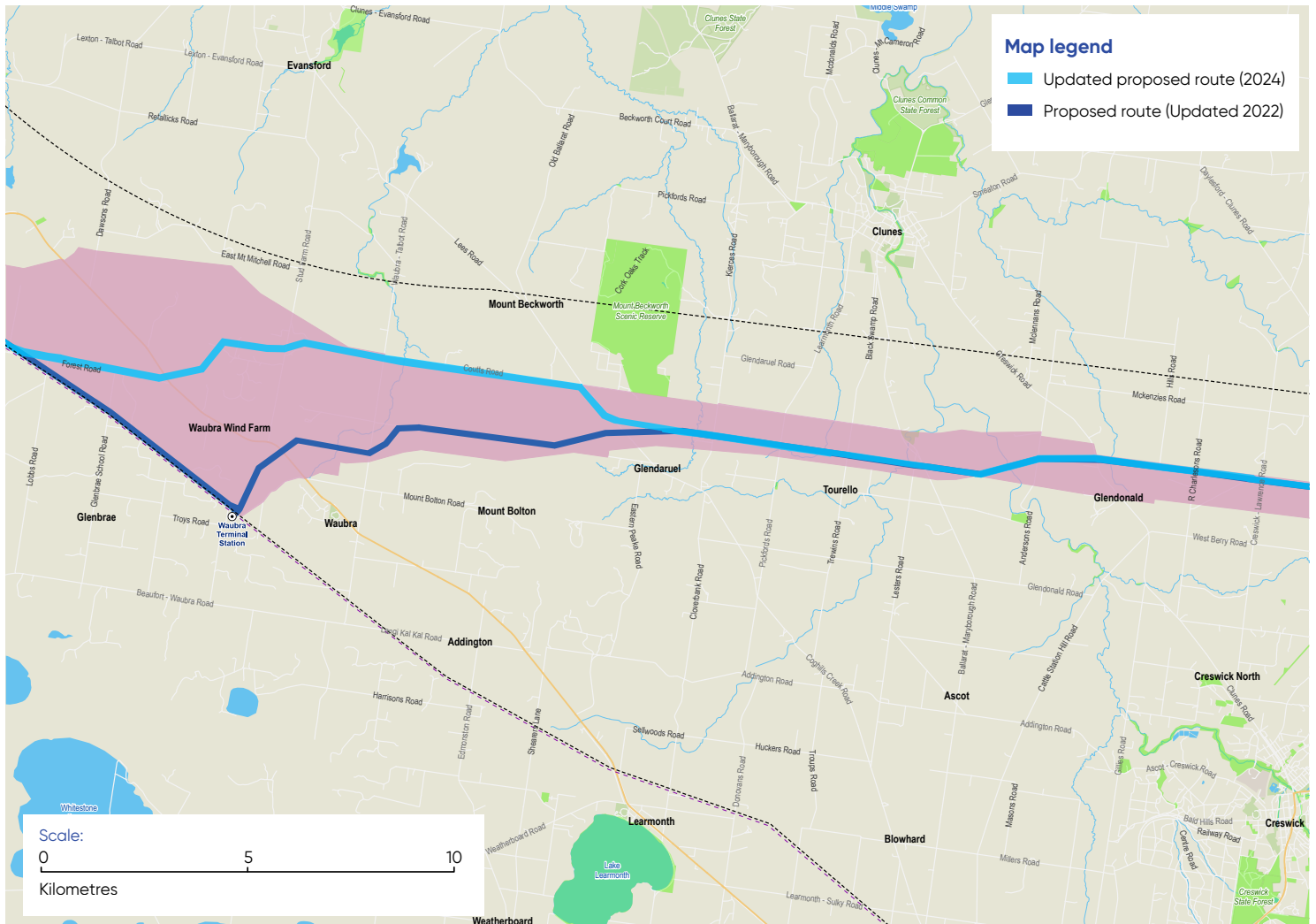
The proposed route from Bulgana to Waubra travels east from the existing Bulgana Terminal Station to the site of a new 500kV terminal station before heading south to join the existing transmission line easement. The route then runs parallel to the existing Ballarat to Horsham transmission line.

## Proposed new terminal station near Bulgana

- Due to the increase in capacity of the 220kV section of the proposed transmission line between Bulgana and north of Ballarat to 500kV, the terminal station previously proposed to the north of Ballarat is no longer required. Instead, a new 500kV terminal station is proposed near the existing Bulgana Terminal Station.
- We have now identified the site for the proposed new terminal station near Bulgana, which is to the north-east of the existing Bulgana Terminal Station. The terminal stations will be connected by a 220kV double circuit transmission line, and the proposed 500kV transmission line will start from the new terminal station.

- We have been engaging with landholders in the area for some time as well as undertaking field surveys and investigations to identify a suitable site for the new terminal station. There are many complexities to balance in this area, including constraints around land use and availability, surface water and ecology impacts.
- The terminal station site will be approximately 500 x 700 metres, however there may be changes depending on the layout and orientation of the final terminal station design.
- The name for the new terminal station has not yet been confirmed.
- Some tower locations have been moved in this section due to the increase in capacity of the proposed transmission line from 220kV to 500kV and to reduce impacts to landholders' property, business and/or operations.

## Section 2: Waubra to Glendonald



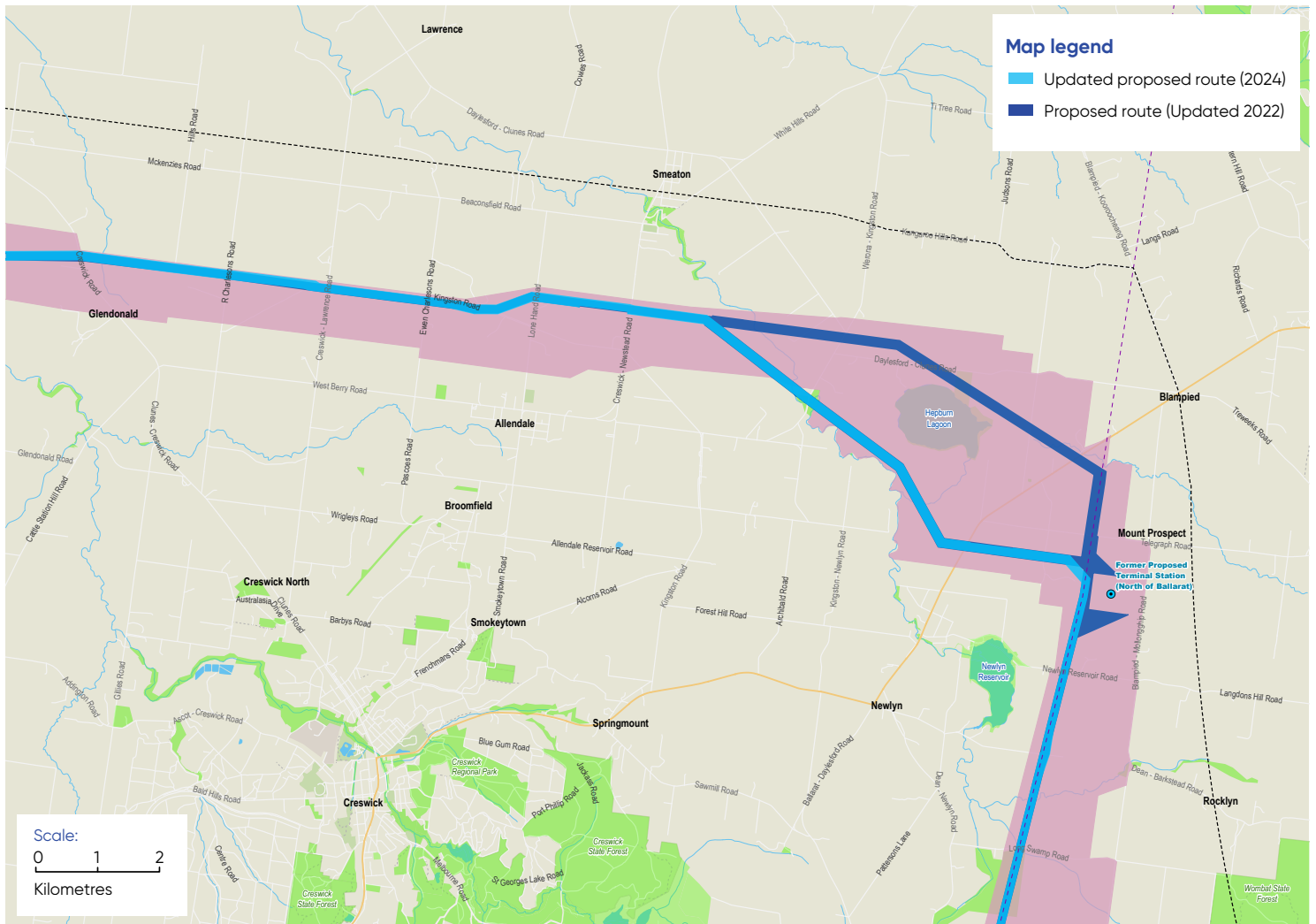
The proposed route between Waubra and Glendonald passes through properties that are generally used for irrigated or dryland cropping, with forestry plantations in some areas. The area includes granite outcrops and volcanic cones, with Mount Bolton and Mount Beckworth recognised as outstanding features in the landscape.

The proposed Western Renewables Link no longer needs to connect to the existing Waubra Terminal Station due to the increase in capacity of the proposed transmission line. We have been working directly with landholders to the north of Waubra since changes were made to the project in 2023 to confirm the new proposed route for this area. We have also undertaken field surveys and investigations to inform the new proposed route. The changes to the route to the north of Waubra were communicated publicly in May 2024.

Some tower locations and access tracks have been moved in this section due to the increase in capacity of the proposed transmission line from 220kV to 500kV in 2023, and in response to landholder feedback and technical specialist advice.

You can find more information about the updates to the proposed route north of Waubra on the project website's resources page: [Updated-proposed-route-north-of-Waubra-May-2024.pdf](#) ([westernrenewableslink.com.au](http://westernrenewableslink.com.au))

## Section 3: Glendonald to Mount Prospect



The proposed route from Glendonald to Mount Prospect runs through the Central Goldfields region, north of Creswick and Allendale. The route follows Three-Chain Road, which turns into Kingston Road. At Lone Hand Road the route runs north-east to join property boundaries, which it follows east to Hepburn Lagoon and Mount Prospect.

### Hepburn Lagoon southern option

After consideration of proposed routes to the north and to the south of Hepburn Lagoon, the southern option was confirmed in September 2023 as the proposed route for the Western Renewables Link in this area. This decision was based on what we know about the visual impacts, biodiversity, residences, land use, historic heritage, social and Aboriginal cultural heritage impacts in this area. We are continuing to work with landholders and neighbours around Hepburn Lagoon to undertake surveys that will inform the project's Environment Effects Statement and Cultural Heritage Management Plans.

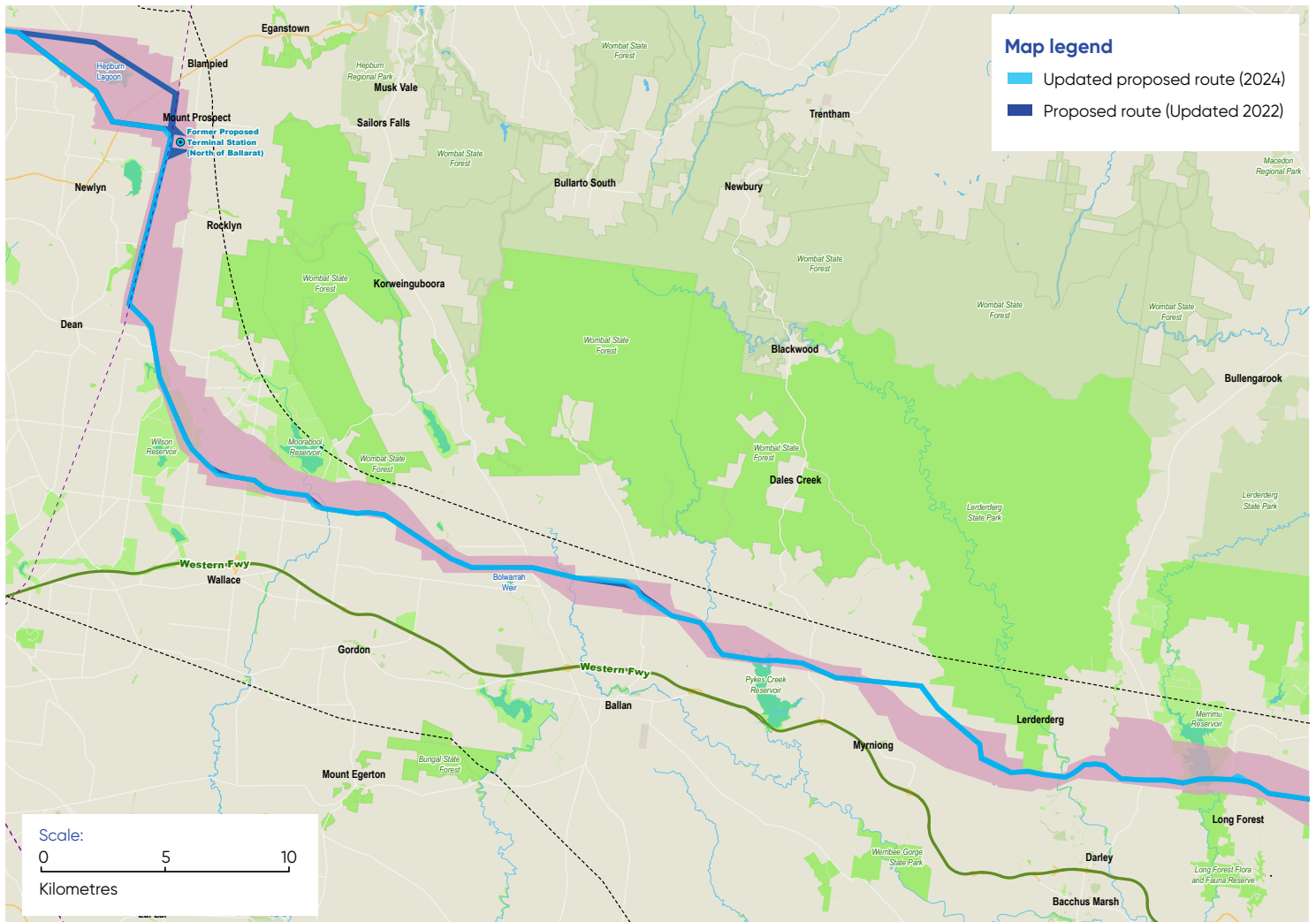
### Removal of the terminal station to the north of Ballarat

Due to the increase in capacity of the proposed transmission line from 220kV to 500kV, the previously proposed terminal station north of Ballarat is no longer required. As a result, the proposed route has been adjusted around the former terminal station location and where the proposed route joins the existing Ballarat to Bendigo transmission line easement.

Tower location and access track changes have also been made in response to landholder feedback and technical specialist advice.



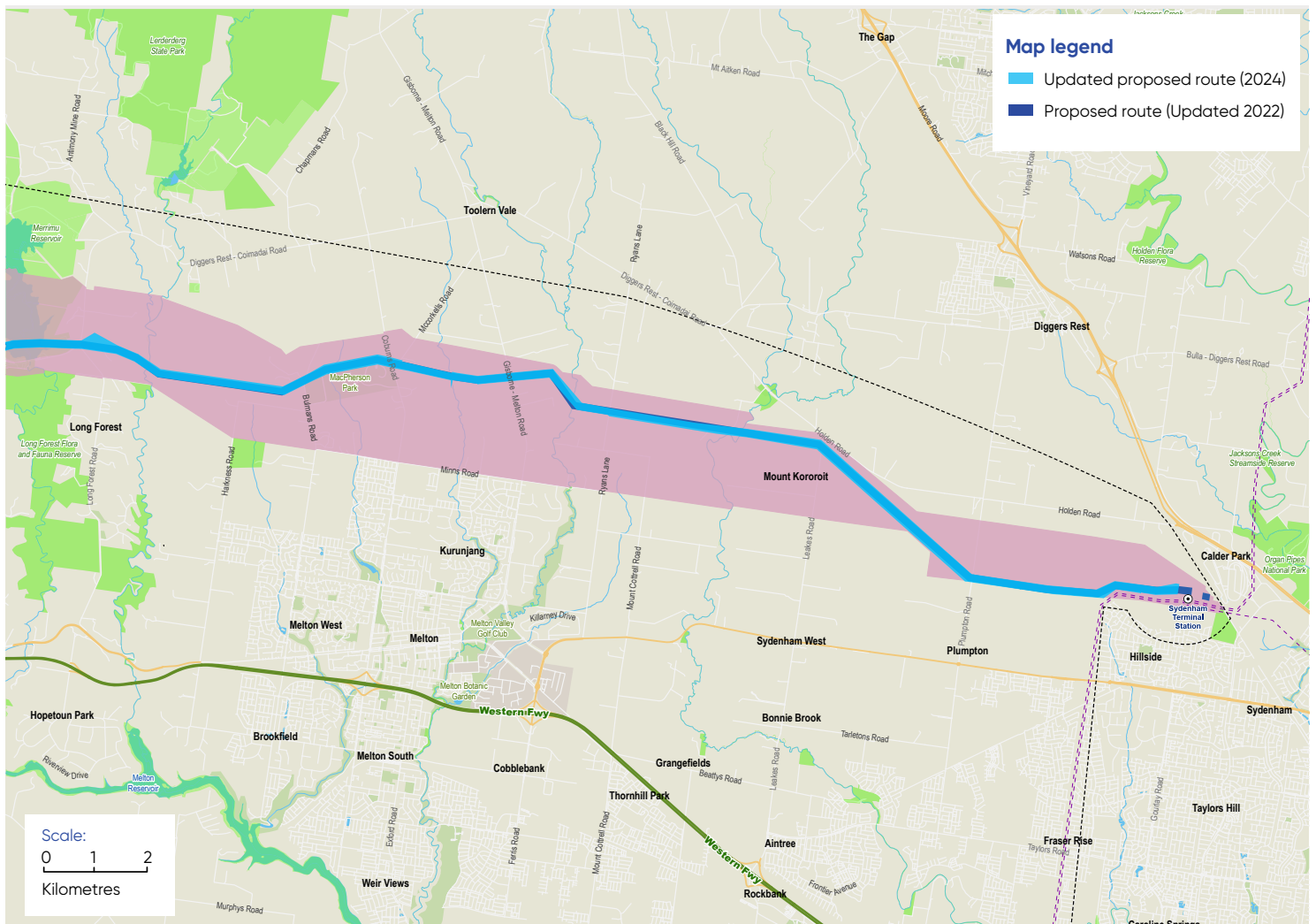
## Section 4: Mount Prospect to Long Forest



The proposed route runs from Mount Prospect to Long Forest, south of Wombat State Forest and along the southern boundary of Lerderderg State Park. The route runs parallel to the existing 220kV Ballarat to Bendigo transmission line in a north-south direction from Mount Prospect to Dean, before heading in an easterly direction, north of Myrniong and Darley, through an existing quarry to Long Forest, crossing the southern end of Merrimu Reservoir.

Tower location and access track changes have been made in response to landholder feedback and technical specialist advice.

## Section 5: Long Forest to Sydenham



The proposed route runs from Long Forest to Sydenham south of Melton Aerodrome and along the northern boundary of MacPherson Park, through the peri-urban Melton local government area. East of MacPherson Park, the proposed route passes north of Mount Kororoit where it turns southeast and then east to Sydenham, crossing the proposed Outer Metropolitan Ring Road near Plumpton Road.

Tower location and access track changes have been made as a result of technical specialist and landholder feedback.

### Sydenham Terminal Station Rebuild

The Sydenham Terminal Station Rebuild is being completed as a separate project. The Western Renewables Link will connect into the rebuilt Sydenham Terminal Station. These connection works will be included in the Western Renewables Link Environment Effects Statement.










## Who to contact

You can contact the project team via email at [info@westernrenewableslink.com.au](mailto:info@westernrenewableslink.com.au) or phone 1800 WRL WRL (975 975).

All landholders on the Western Renewables Link proposed route have a designated Land Liaison Officer who is their primary point of contact for the project. The role of the Land Liaison Officers is to provide landholders with project information and updates, facilitate the Option for Easement process, address any questions and concerns, and consult with landholders about the project. They also communicate landholder views and preferences back to the project team. Landholders can confirm the contact details for their Land Liaison Officer by contacting the project team via the details above.

## Western Renewables Link

 [www.westernrenewableslink.com.au](http://www.westernrenewableslink.com.au)  
 1800 WRL WRL (975 975)  
 [info@westernrenewableslink.com.au](mailto:info@westernrenewableslink.com.au)

Ballarat PO Box  
PO Box 638, Ballarat VIC 3353

## Information straight to your inbox

Sign up for information straight to your inbox at the project website [www.westernrenewableslink.com.au/contact](http://www.westernrenewableslink.com.au/contact).

## Feedback

You can provide feedback on this document via our website [www.westernrenewableslink.com.au/contact](http://www.westernrenewableslink.com.au/contact) or by calling 1800 WRL WRL (975 975) or by emailing [info@westernrenewableslink.com.au](mailto:info@westernrenewableslink.com.au).

## Translation and interpretation services



If you need an interpreter, please call 13 14 50.






If you are deaf and/or find hearing or speaking with people on the phone difficult, please contact the National Relay Service on voice relay number 1300 555 727, TTY number 133 677 or SMS relay number 0423 677 767.

## Complaints

If you have a query, a compliment or a complaint, you can let us know by using the online enquiry form on [www.westernrenewableslink.com.au/community-and-landholders/#complaints-feedback](http://www.westernrenewableslink.com.au/community-and-landholders/#complaints-feedback).

Or you can let us know by:

 1800 WRL WRL (975 975)  
 [info@westernrenewableslink.com.au](mailto:info@westernrenewableslink.com.au)  
 PO Box 638, Ballarat VIC 3353

You can also lodge a complaint or provide feedback directly to your Land Liaison Officer.

Complaint handling steps:

1. You can lodge a complaint with AusNet as outlined above.
2. We will acknowledge receipt of a complaint in writing and will provide a unique complaint reference number within two working days.
3. We aim to resolve the complaint within ten working days.
4. Where we cannot reach a resolution within ten working days, we will keep you informed of the progress being made with handling the complaint by providing regular updates on the investigation and a revised timeframe for resolving the complaint.
5. At any time, you may request to have your complaint escalated to the senior management team by sending an email to [GeneralManager@westernrenewableslink.com.au](mailto:GeneralManager@westernrenewableslink.com.au)

If your complaint or question relates to the RIT-T process, you can raise it with AEMO by emailing [WestVicRITT@aemo.com.au](mailto:WestVicRITT@aemo.com.au).

If your complaint or question relates to the Environment Effects Statement process, you can raise it with the Department of Transport and Planning by emailing [environment.assessment@delwp.vic.gov.au](mailto:environment.assessment@delwp.vic.gov.au).

If you are not satisfied with the outcome after you have made a complaint to the project team, you may pursue dispute resolution through the Energy and Water Ombudsman Victoria if the complaint relates to access or proposed access to private land under section 93 (1) of the *Electricity Industry Act 2000* (Vic), and/or compliance with the Land Access Code of Practice.

## Other sources of information

**Australian Energy Infrastructure Commissioner** ([www.aeic.gov.au](http://www.aeic.gov.au)) including information about how to make a complaint, best industry practice and resources for landholders.

**Australian Energy Market Operator** ([www.aemo.com.au](http://www.aemo.com.au)) including information on the Regulatory Investment Test for Transmission (RIT-T) process for this project.

**Energy and Water Ombudsman Victoria** ([www.ewov.com.au](http://www.ewov.com.au)) including information about complaints and dispute resolution.

## Energy Safe

([www.energysafe.vic.gov.au](http://www.energysafe.vic.gov.au)) including information about the safe design and operation of high voltage transmission networks in Victoria.

## Environment Effects Statement Process in Victoria

([www.planning.vic.gov.au/environmental-assessments/environmental-assessment-guides/environment-effects-statements-in-victoria](http://www.planning.vic.gov.au/environmental-assessments/environmental-assessment-guides/environment-effects-statements-in-victoria)) including information about the environment assessment process managed by the Department of Transport and Planning.

## Essential Services Commission

([www.esc.vic.gov.au](http://www.esc.vic.gov.au)) including information about the regulation of transmission licenses in Victoria and the Electricity Transmission Company Land Access Code of Practice.

## Valuer General of Victoria




([www.land.vic.gov.au/valuations/first-time-here/about-valuer-general-victoria](http://www.land.vic.gov.au/valuations/first-time-here/about-valuer-general-victoria)) including general information about how land is valued in Victoria.

The information in this document is for reference only – it is not designed to be, nor should it be regarded, as professional or legal advice. You should seek appropriate independent professional and/or legal advice where appropriate and before making any decisions based on material in this document. The information is an overview (in summary form) and does not purport to be complete. This document, and the information in this document, will not form the basis of any contract or commitment. AusNet does not guarantee or warrant the accuracy, completeness, or currency of the information provided and AusNet, its directors, officers, employees, agents and advisers disclaim all liability and responsibility (including for negligence) for any direct or indirect loss or damage which may be suffered by any recipient through use or reliance on anything contained in or omitted from this document.

## More information

Visit the project website [westernrenewableslink.com.au](http://westernrenewableslink.com.au) for the latest project information.

## Contact us

 [westernrenewableslink.com.au](http://westernrenewableslink.com.au)  
 1800 WRL WRL (975 975)  
 [info@westernrenewableslink.com.au](mailto:info@westernrenewableslink.com.au)

Delivered by

**AusNet**